



National Institute of  
Neurological Disorders  
and Stroke

# National Institute of Neurological Disorders and Stroke

## NIH Neurological Surgery Residency Training Program



Figure 1: NIH Clinical Center and Research Facilities

### HIGHLIGHTS

- Program designed to be a model for training academic neurosurgical leaders
- Opportunity to perform world-class neuroscience research
- Develop skills as independent researchers
- Training that will lead to research funding success in a more competitive environment

### CORE FACILITIES

- National Institutes of Health Clinical Center**  
*Clinical Training*
  - 240-bed hospital
  - Training and mentoring by 4 full-time clinical faculty
  - 1 ½ years of clinical experience*Research Training*
  - 2 years of protected research time
  - Receive NIH Intramural funding (No grants required)
  - Training and mentoring by 3 full-time senior research faculty members
  - Opportunity to collaborate with scientists throughout NINDS (200 neuroscience labs on NIH campus) and other NIH institutes
- MedStar Georgetown University Hospital**
  - 609-bed hospital
  - Training and mentoring by 8 full-time senior faculty in all neurosurgical subspecialties
- MedStar Washington Hospital Center**
  - 900-bed hospital
  - Training and mentoring by 4 full-time senior faculty with a broad range of expertise
- Children's National Medical Center**
  - 323-bed hospital
  - Training and mentoring by 5 full-time pediatric neurosurgeon faculty members

### PROGRAM OVERVIEW

- The Surgical Neurology Branch of the National Institutes of Health (NIH) offers an innovative 7-year, ACGME-accredited Neurological Surgery Residency Training Program in collaboration with the MedStar Georgetown University Hospital (GUH), MedStar Washington Hospital Center (WHC), and Children's National Medical Center (CNMC).
- This program is designed to foster the application of basic science research to clinical neurosurgical problems and is intended for those wishing to pursue careers as independent physician-scientists.

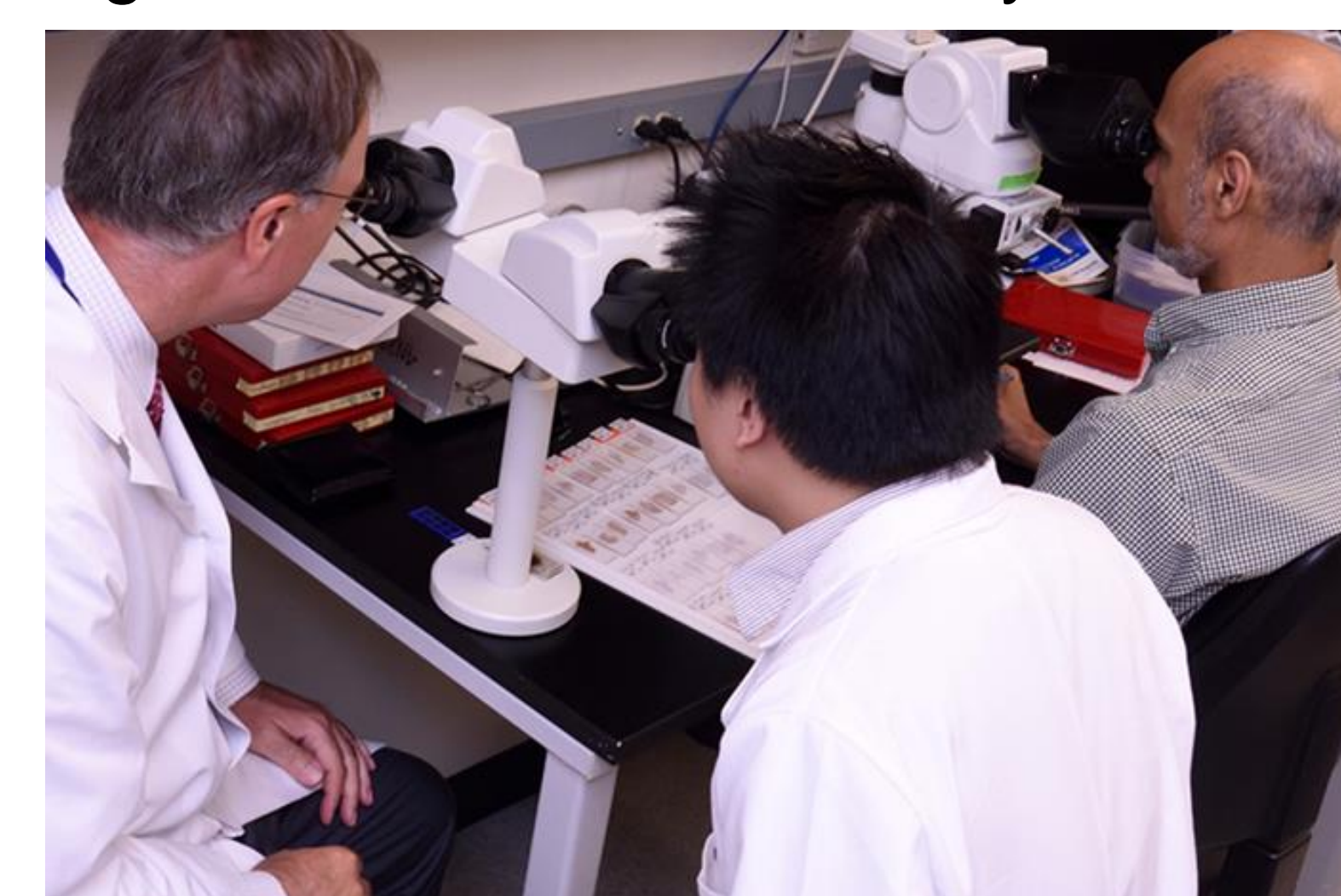
Figure 2: Program Block Schedule

Year	July-December	January-June
PGY-1	General Neurosurgery & Neurotrauma Georgetown University Hospital (6 months)	Neurotrauma Washington Hospital Center (2 months)
		General Neurosurgery NIH (1 month)
		Neurology NIH (1 month)
		Neuro-Pathology NIH (1 month)
PGY-2	Spinal Rotation Georgetown University Hospital (6 months)	Vascular Rotation Washington Hospital Center (6 months)
	Pediatric Neurosurgery Children's National Medical Center (4 months)	Spinal Rotation Georgetown University Hospital (4 months)
PGY-3	Research Rotation NIH (12 months)	
PGY-4	Research Rotation NIH (12 months)	
PGY-5	Research Rotation NIH (12 months)	
PGY-6	Senior Clinical Rotation NIH (12 months)	
PGY-7	Chief Resident Georgetown University Hospital (8 months)	Chief Resident Washington Hospital Center (4 months)

Figure 3: Resident & Faculty in the OR



Figure 4: Resident & Faculty in the lab



### BENEFITS

- Residents enrolled in ACGME-accredited training programs at the NIH can apply to receive loan repayment (LRP):
  - Non-competitive program: receive \$20,000 per year, up to 3 years, of qualified educational debt
  - Competitive program: receive \$50,000 per year, up to 3 years, of qualified education debt

### PATIENT CARE

- The NIH Neurosurgery Clinic treats patients with tumors of the central and peripheral nervous system, Parkinson's Disease, Neurofibromatosis Type 2 (NF2), von Hippel Lindau (VHL), Syringomyelia/Chiari I Malformation and cancer pain.
- Residents at GUH, WHC, and CNMC participate in neurosurgery teams performing spine and cerebrovascular surgery, trauma care, functional neurosurgery, pituitary surgeries, gamma knife radiosurgery, and pediatric neurosurgery.

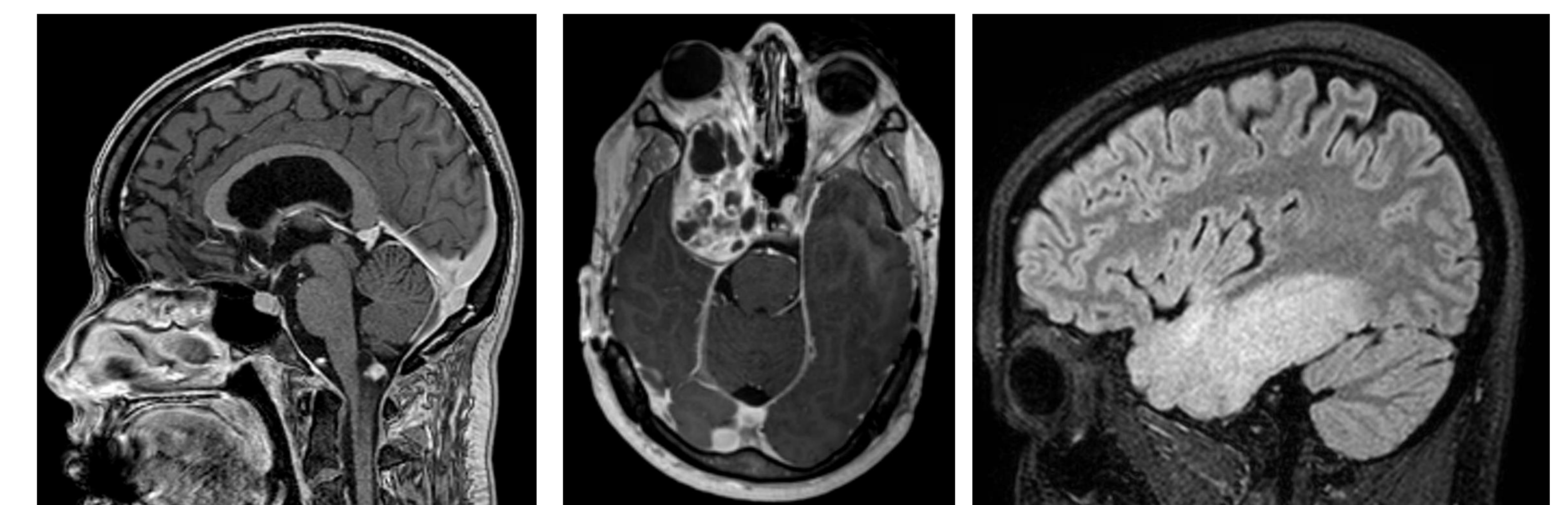
### RESEARCH

- Resident chooses laboratory of interest in Surgical Neurology Branch, another NINDS branch, or other NIH institutes.
- All patients are admitted to the NIH on research protocols
- Program Residents take the Introduction to the Principles and Practice of Clinic Research and grant writing courses

### APPLICATION INFORMATION

- The NIH residency program participates in the National Residency Match Program (NRMP) and receives applications through the Electronic Residency Application Service (ERAS).
- Applicants apply to both the NIH and GUH residency programs.
- The NIH Program interviews applicants with demonstrated interest in and aptitude for careers in academic neurosurgery.
- The NIH program enrolls one PGY1 candidate each year.

Figure 5: MRI images of tumors seen at the NIH



For more information, please visit:  
<https://research.ninds.nih.gov/surgical-neurology-branch>