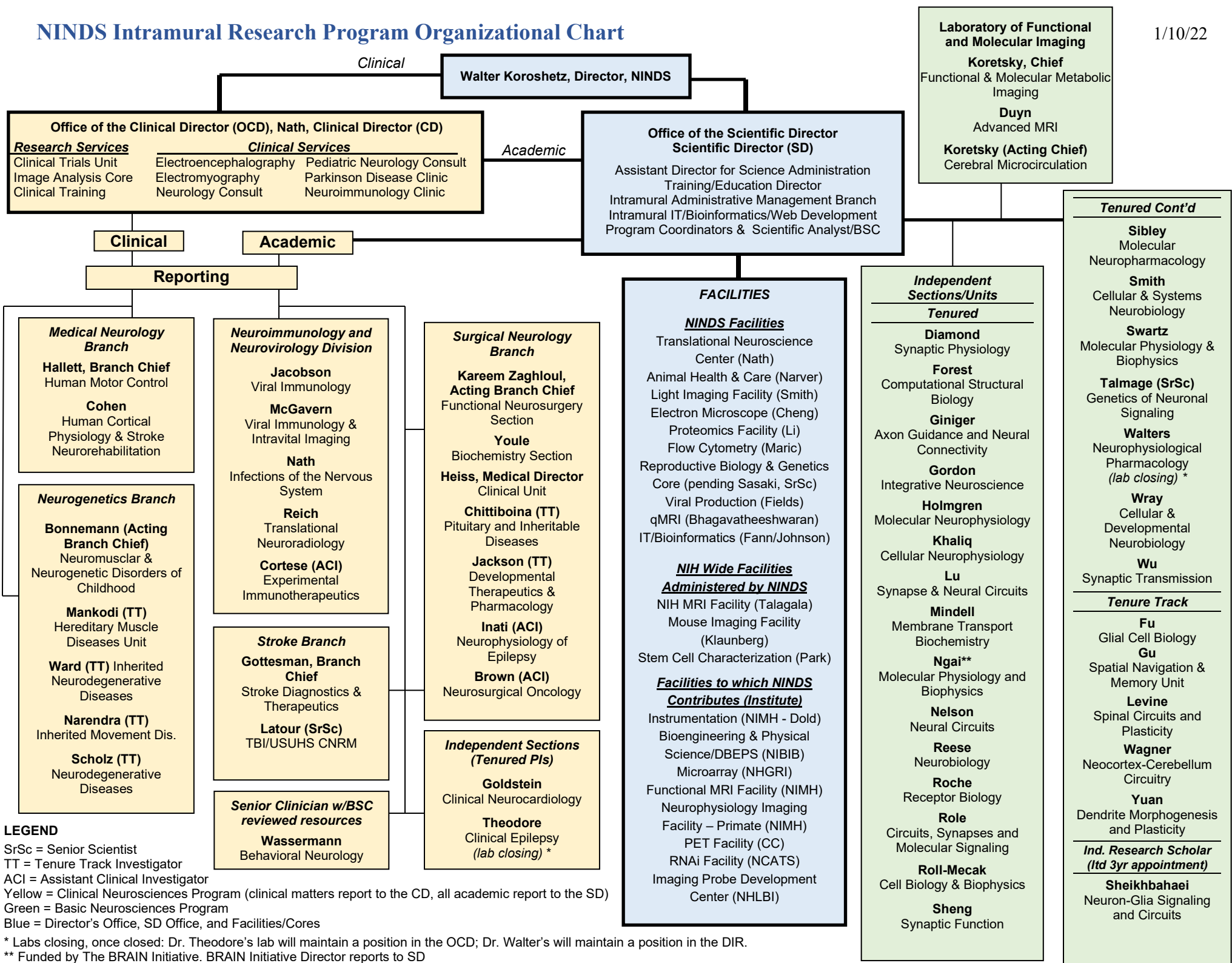


NINDS Intramural Research Program Organizational Chart

1/10/22



LEGEND
 SrSc = Senior Scientist
 TT = Tenure Track Investigator
 ACI = Assistant Clinical Investigator
 Yellow = Clinical Neurosciences Program (clinical matters report to the CD, all academic report to the SD)
 Green = Basic Neurosciences Program
 Blue = Director's Office, SD Office, and Facilities/Cores

* Labs closing, once closed: Dr. Theodore's lab will maintain a position in the OCD; Dr. Walter's will maintain a position in the DIR.
 ** Funded by The BRAIN Initiative. BRAIN Initiative Director reports to SD